

MAY 2025

ELLISTON ECHO

ELLISTON COMMUNITY AND VISITOR INFORMATION CENTRE NEWS

VIEW ONLINE AT www.elliston.com.au

Email : info@elliston.com.au

Phone : 08 8687 9200

Fax : 08 8687 9240

IF YOU HAVE A COMMUNITY NOTICE OR SOME INTERESTING NEWS YOU WOULD LIKE TO SHARE WITH THE COMMUNITY, PLEASE EMAIL OR DROP INTO CENTRE BEFORE THE 26TH OF THE MONTH

WHAT'S ON IN MAY!

The Football and Netball seasons have begun with a bang, with a great day and night of festivities on 3rd May. Get along and support the teams and show everyone the Elliston Districts spirit.

The School is hosting the Cancer Council's Biggest Morning Tea at 11.00am on 22 May. Take a gold coin donation to enjoy a tasty morning tea.

On 27 May, Dementia Australia are running sessions to help people who are worried about their memory. These sessions are for any age. Call the Council office if you would like to register for this event.

SAVE THE DATE

22 MAY - BIGGEST MORNING TEA

27 MAY - DEMENTIA AUSTRALIA MEMORY COURSE

OPENING HOURS

Monday - Friday

9.00am - 5.00pm

Saturday - Sunday

9.30am - 1.00pm

Closed for Lunch Mon-Fri

12.30pm - 1.30pm

ELIZABETH ROGERS



VOLUNTEER SPOTLIGHT

What inspired you to become a volunteer with us?

I have volunteered in many roles in my adult life and felt that volunteering at ECVIC was a great way to get to know this town and the people who live here.

What do you enjoy doing in your spare time?

Reading & travelling.

What is something you're really proud of achieving?

Living fulltime in my motorhome travelling Australia, on my own, for almost 2 years.

Do you have any favourite quotes or sayings that resonate with you?

It's not what happens to you, it's how you handle it.

Where is your favourite place to visit in our region?

There are several - Locks Well, the Elliston Coastal Trail, Talia Caves are just a few and I love telling visitors about them all and more when I'm volunteering at the ECVIC.



Facebook Pages - Elliston Community & Visitor Information Centre
- Australian Salmon Fishing Championship - Elliston

Facebook Group - Elliston Markets



Instagram

- @elliston.sa



Australian Government



**Services
Australia**
Access Point



ELLISTON
Community & Visitor
Information Centre

COMMUNITY NEWS

SHARING OUR ENVIRONMENT WITH PIGEONS

The SACWA Elliston branch presents the next of our bird articles for your interest.

There is currently a population of approximately 5,000 pigeons within the Elliston district.

Pigeons have co-existed with humans for thousands of years, and possess cognitive capabilities that enable them to identify individual people and form bonds with them.

Pigeons have an extraordinary ability to navigate long distances. During wartime, due to their homing abilities, speed and altitude, pigeons served as vital messengers, relaying critical information across battlefields and from downed aircraft, especially when radio communication was unreliable. Pigeons were sent from the front lines, transmitting intelligence and aiding in rescue efforts.

During WW2, of the 53 Dickin medals (animal VC's) presented, 32 went to pigeons. The medals were instituted in the UK by Maria Dickin in 1943 to honour the work of animals in WW2. The medal is a bronze medallion bearing the words "For gallantry we also serve," set within a laurel wreath. The medal was carried on a ribbon of striped green, dark brown and pale blue. However, with the advent of electronic warfare, homing pigeons have become obsolete.

Some pigeons were quite famous: one named Spike flew 52 missions without receiving a single injury. However a carrier pigeon's job, was dangerous. Enemy soldiers often tried to shoot them down.

Pigeons: specifically domestic homing pigeons, arrived in Australia with European settlers. These birds originally from Europe, North America, North Africa and the Middle East were domesticated thousands of years ago. Some of these introduced birds have escaped captivity and established large breeding colonies, resulting in the widespread feral populations seen today. As such, pigeon eradication is now a worldwide issue.

Issues caused by pigeons include:

- Attracting ticks, mites, cockroaches and rats
- Damage to buildings and monuments due to the highly corrosive nature of acid in pigeon droppings
- Damage to properties by pigeons roosting or breeding in roof spaces, rolled steel joists and inside factory units
- Providing a vector for the introduction of weeds and disease.
- Increasing the risk of disease and parasite transmission between feral, domestic and seabird populations
- Pigeon roosting on roofs, droppings carried by rain into gutters and tanks can carry pathogens that lead to diseases like histoplasmosis, cryptococcosis, and psittacosis, which can severely affect humans and pets.
- Overpopulation may threaten local biodiversity by outcompeting native bird species for resources.

What ideal natural resources are required for pigeon occupation into a district?

These can include:

- safe nesting sites away from natural predators: rock cliffs, overhangs, caves, verandah overhangs and accessible shedding
- availability of permanent potable water: natural drainage into swamps and permanent depressions, soaks where the water table is at the surface, agricultural troughs and overflow
- availability of food: grains, seeds, insects, snails, earthworms, green shoots and roots in ovals and lawns, wetlands, watered lawns all provide fresh nutrient on which to graze

Our environment provides all the necessary resources for population establishment. As pigeons are capable of breeding 3- 4 times per year, with 1- 2 eggs per brood, and do not migrate far from their birthplace, this makes them difficult to remove

The District Council of Elliston has continued an integrated pest management approach over a number of years, and they are slowly making inroads through persistent application of both lethal and non lethal means. The Council website has ideas for bird proofing, scare devices and recommended property management which will help with pigeons near residential properties.

There is however a need for Council and residents to work together to dissuade nesting, perching and non availability of water and food sources around houses and sheds. If this issue is everyone's responsibility, every resident needs to be active in discouraging.

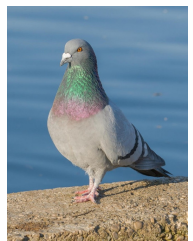
The toolbox available to Council or contractors can include:

- indiscriminate (male/ female) targeted shooting
- live trapping using net guns
- ovo control, using baited feed to sterilise egg production: females need to ingest the correct dosage daily
- nest / egg destruction

The Council was awarded a \$15,000 grant from the Eyre Peninsula Landscape Board to trial ovo control on select sites. This baiting needs to be on-going over years to reduce numbers, but it theoretically does work and is part of fully-integrated approach to pigeon eradication, with a rate of decline estimated at 5% per month if managed appropriately.

Come on all community/ business and farm members. Let's all do our bit!

Reference group: C O'Neil, I & D Penna, G Fieldhouse, I Quinn (EP Landscape Board), J Rossi, Co-ordinator S Fieldhouse. Feedback or comments welcome: gally3@bigpond.com



COMMUNITY NEWS

ELLISTON CAMERA CLUB



Waterloo Bay Sunrise



Sunset Elliston Jetty

PHOTOS BY CHERYL CLISSOLD



Eyre Eye Centre
is visiting
Elliston Medical
Centre
on
**Wednesday
4 June 2025.**

To book an eye test
please phone
reception on
86824566.
Website is:
www.eyreeyecentre.com.au

Elliston Telephone
books



Available at the Post Office or
Elliston Community & Visitor
Information Centre
\$6.00 Large
\$4.00 Small
Proceeds go to the Elliston
Children's Centre

Are you interested in being a sponsor for the
Annual Australian Salmon Fishing
Competition?

Reach out to Sam at the ECVIC if you would
like more information.



1 JUNE TO 31 AUGUST 2025



FISH FROM LAND
SHERINGA TO
MT CAMEL
NEAR THE
MAGNIFICENT
ELLISTON

THIS YEAR, PRIZES WILL BE AS FOLLOWS:

- Overall competition heaviest fish
- 2nd overall competition heaviest fish
- 3rd overall competition heaviest
- Junior overall competition heaviest fish
- Monthly heaviest fish
- Weekly Mystery Weight

Entry only \$10, tickets available from
participating businesses. Weigh-in at
Elliston Caravan Park

For further information,
visit:
www.elliston.com.au/salmon
Elliston Community Visitor
Information Centre
info@elliston.com.au or
(08) 8687 9200

Facebook: Australian Salmon
Fishing Championship - Elliston
www.facebook.com/asfc.elliston



COMMUNITY NEWS

ELLISTON EASTER SATURDAY FISHING DAY COMPETITION

On Saturday the 19th April 2025, the Elliston & Districts Business & Progress Association held their Inaugural Annual Easter Saturday Fishing Day Competition.

27 Juniors and 35 Adults registered and braved the cool windy conditions. The sun shone early, but soon the cool front moved through, resulting in a couple of showers of rain and strong winds from the west. Jetty fishing was popular and certainly many sheltered beaches could be found. In fact, one Fisherman bagged out with Whiting from one of those beaches. A couple boats ventured out once the winds had eased.

Weigh ins were at the Elliston Caravan Park, 13 Juniors weighed in with 4 of those in 2 categories.

Junior winners

Heaviest Whiting - Alexis Boehm

1st Heaviest All Other Species - Sonny Matthews - Trevally

Mystery Weight - Bai Harrowfield - Tommy Rough

As no squid was entered, Eli Keane won the Lightest Legal Weighed in Fish - Tommy Rough.

17 Adults weighed in with 7 of those over 2 categories.

Adult winners

Heaviest Whiting - Alex Boehm

Longest All Other Species - Ray Boehm - Flat Head

Heaviest Salmon - Rusty Harrison- variety Salmon Trout

Mystery Weight- Vinnie Phelps- Flat Head

As no Squid was entered, Peter Reed won the Heaviest All Other Species - Crayfish

Presentations followed, each winner receiving Prizes, Vouchers and Cash with a combined total of \$3,000. The Committee was overwhelmed by the generous support of Local Businesses.

A huge thank you to all the sponsors of the competition - all named on the following page. It would not have been possible to hold this without all of your support.

The Committee wish to thank The District Council of Elliston for their Support.

Special Thanks to Tayla Jones from The District Council of Elliston for her assistance also.

Stay tuned as the 2026 Elliston Easter Fishing Comp will be even bigger and better!

Leanne Kelly

On behalf of The Elliston & Districts Business & Progress Association

JUNIOR WINNERS



Alexis Boehm-
Heaviest Whiting

Sonny Matthews-
1st Heaviest All
other species -
Trevally



Bai Harrowfield-
Mystery Weight -
Tommy Rough



Eli Keane-Lightest
Legal Weighed-in
Fish - Tommy Rough



ADULT WINNERS



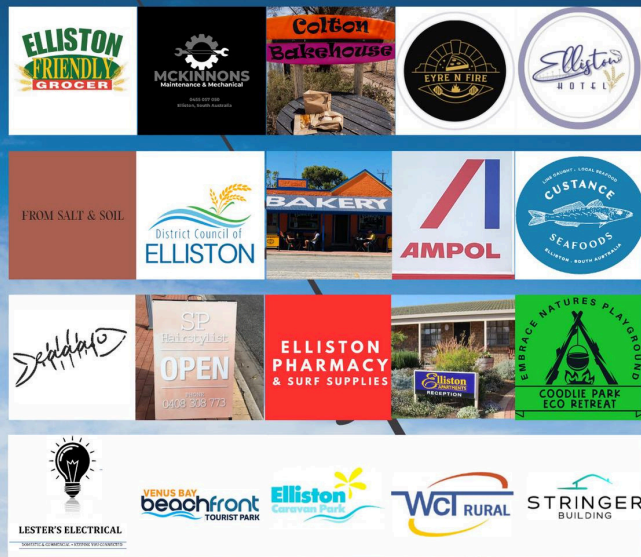
Left
Alex Boehm -
Heaviest Whiting

Right
Ray Boehm -
Longest all other
species-Flat Head



Left L-R Ryan
McKinnon (McKinnons
Maintenance and
Mechanical),
Rusty Harrison
Heaviest Salmon-
variety Salmon Trout
Peter Reed - Heaviest
All Other Species -
Crayfish
Right
Vinnie Phelps Mystery
Weight - Flat Head





Sponsors:

- Elliston Supermarket
- McKinnons Maintenance and Mechanical
- Colton Bakehouse
- Eyre n Fire
- Elliston Hotel
- From Salt and Soil
- District Council of Elliston
- Bakery No. 9
- Custance Seafood
- Elliston Anxious Anglers Association
- Lester Electrical
- Saltwater Roadhouse
- SP Hair
- Elliston Pharmacy
- Venus Bay Beachfront Tourist Park
- Elliston Apartments
- Coodlie Park Eco Retreat

Tackle World
PORT LINCOLN

Rally's Rentals

Elliston Waterloo Bay
Tourist Park

Spot On
Fishing Tackle

- Elliston Caravan Park
- Waterloo Bay Tourist Park
- WCT
- Stringer Building
- Port Lincoln Tackle World
- Rally Rentals
- Spot On Fishing Tackle and Outdoors

FREE Child Development Checks

sahealth.sa.gov.au/eyreandfarnorthlhn

What are they?

Child development checks assess important areas of a child's development, such as communication, motor skills, problem solving and social/emotional development.

These checks are conducted by a trained professional (Registered Nurse).

Why are they important?

A child development check can identify your child's strengths as well as areas where your child may need additional support during their early years.

It is recommended that children have at least three development checks from birth to 5 years around the milestones ages of 6 months, 12 months, 18-24 months, 3 years and 4-5 years.

If you consent for your child to receive a check:

- a trained health professional will conduct a free development check with you and your child.
- you will receive personal and confidential feedback summarising the outcome of your child's check.

If the check identifies your child would benefit from further support, the team can assist with referrals to allied health professionals, paediatrician/s or other community agencies.

Access your free check

For more information or to book an appointment call 0422 948 744 or email Health.EFNCDC@sa.gov.au

Upcoming clinic details:

Location:

Elliston Community Health

Date: Thursday 29th May 2025

Time: Please phone to book



Supporting people experiencing domestic and family violence.

If a consumer is in immediate danger call 000.

Yarredi Services

Eyre Peninsula
Ph: 1800 110 617
Email: enquiry@yarredi.org.au
yarredi.org.au

Domestic and family violence support, emergency accommodation, counselling, children's wellbeing program, crisis support, 24/7.

Centacare Domestic and Family Violence

Ceduna
Streaky Bay (Satellite Office)
Ph: (08) 86287600
Monday-Friday 9-5pm
After hours: 0400 879 541

Uniting Country SA

Coober Pedy
Ph: (08) 86339095
After hours: 0488 991 945

Crisis intervention, information, advocacy and counselling.

1800 RESPECT

Australia's National Sexual Assault Domestic and Family Violence Counselling Service

Ph: 1800 737 732 (24 hour service)

1800respect.org.au

Text 'HELLO' to 0458 737 732

SA Domestic Violence Crisis Line

A statewide service offering assistance to women experiencing domestic violence in SA by providing counselling and safe accommodation options.

Ph: 1800 800 098 (24 hour Service)

Domestic Violence Disclosure Scheme

Police disclosure on partner or former partner.

Ph: 131 444

www.police.sa.gov.au/your-safety/dvds

Yarrow Place

Rape and sexual assault service.

Ph: 1800 817 421

Ph: (08) 8161 7000 – switchboard
wchn.sa.gov.au/our-network/yarrow-place

Consider referral to social work with consumer's consent or consult with social work staff for additional support.

We are here to listen and link you with supports against violence.

We routinely ask our community about domestic and family violence as part of their health care to provide help and support if needed.

Call 1800 RESPECT (1800 737 732) or the Domestic Violence Crisis Line on 1800 800 098 AVAILABLE 24 HOURS.



sahealth.sa.gov.au/eyreandfarnorthlhn



Health
Eyre and Far North
Local Health Network



Health
Eyre and Far North
Local Health Network

LOCAL BUSINESS NEWS & UPDATES

Catholic Church: Elliston



MAY 2025

Saturday 3rd	9am
Saturday 10th	9am
Saturday 17th	9am
Sunday 25th	11am
Saturday 31st	9am

Children's Activities

Keep your eye out on the ECVIC socials for up and coming children's activities.



Elliston Men's Shed



Open for morning chat, tea and coffee.
9-11am Monday, Tuesday, Wednesday
and Thursday.

Also available at the shed:

- Key Cutting Service
- Knife and Scissor Sharpening

The Men's Shed Group meets for committee meetings on the second Thursday of the month at 9.30am.

ALL WELCOME

Elliston CWA

Next Meeting for Elliston Branch SACWA (NB date change) is to be held on **Thursday May 15th at 10.30am** in our room on Memorial Drive.

It's our **Bring a Friend day**, so if you are not currently a member, but would like to come along and have a cuppa with us, please feel welcome.

We shall be reviewing our Table Day effort, and looking forward to learning the new State Handicraft on June 2nd.

Table Day is to be held this week on Thursday May 1st at Cummins (this showcases our craft work etc for the year past).



Government of South Australia
SA Health

Elliston Community Health Centre Opening Hours:

Monday to Friday
8:30 AM - 4:30 PM

Phone: 08 8687 9012
Fax: 08 8687 9341

Mid Eyre Medical Centre Opening Hours:

Monday to Wednesday
(by appointment)
9:00 AM - 5:00 PM

Phone: 08 8687 9110
Fax: 08 8687 9318

Allied Health Clinic Dates:

Physiotherapy - 5 & 19 May 2025
Podiatry - 5 May 2025
Dietetics - 27 May 2025
Speech Therapy - N/A
Social Work - 14 May 2025
Occupational Therapy - 27 May 2025

URGENT REFERRALS MAYBE REVIEWED VIA TELEHEALTH OR PHONE

To get a referral for an appointment contact:

Ayunda
Phone: 08 8687 9012
Monday to Friday
8:30 AM - 4:30 PM

Community Nurse:

Elliston, Wudinna, and Lock

Jess Bascomb
Phone: 0428 576 670
Monday to Friday
8:00 AM - 4:30 PM

Diabetes Educator:

Ashlee Stringer
Monday to Tuesday
8:30 AM - 3:00 PM
Thursday
8:30 AM - 5:00 PM

Support at Home Services:
Elliston, Wudinna, and Lock

Annette Jolly
P 0403 803 941
Monday - Friday
9.00am - 3.30 PM

Additional Info:

Child Development Check
29 May 2025

Eyre Eye Centre
Visiting Elliston
4 June 2025
10 September 2025



WHAT'S ON THIS MONTH

MAY CALENDAR

Mon

Tue

Wed

Thu

Fri

Sat

Sun

			1	2 YELLOW BINS	3 Elliston Districts v Eyre United- Elliston Elliston Transfer Station 10am-12noon Catholic Church 9am	4 10c bottle Recycling Elliston Caravan Park 11am-5pm
5 RED BINS	6	7 Elliston Transfer Station 10am-12noon	8	9	10 Catholic Church 9am Elliston Districts v Tumby Bay- Tumby Bay	11 10c bottle Recycling Elliston Caravan Park 11am-5pm
12 RED BINS	13	14 Elliston Transfer Station 10am-12noon	15 CWA Meeting 10.30am	16 YELLOW BINS	17 Catholic Church 9am Elliston Districts v Cougars- Minnipa	18 10c bottle Recycling Elliston Caravan Park 11am-5pm
19 RED BINS	20 Council Meeting	21 Elliston Transfer Station 10am-12noon	22 Biggest Morning Tea - 11am Elliston School	23	24 Elliston Districts v United Yeelanna- Poochera	25 Catholic Church 11am 10c bottle Recycling Elliston Caravan Park 11am-5pm
26 RED BINS	27 10am Worried About Your Memory	28 Elliston Transfer Station 10am-12noon	29 Child development checks	30 YELLOW BINS	31 Catholic Church 9am Elliston Districts v Ramblers- Cummins	

Northern Eyre Health Care HEALTHCARE NEWSLETTER

MONTHLY NEWSLETTER

MAY 2025



Northern Eyre Peninsula Health Alliance
Deb Larwood and Dean Johnson.



A MESSAGE FROM YOUR COUNCILS

The Northern Eyre Peninsula Health Alliance, including the District Councils of Streaky Bay, Elliston, Wudinna, Kimba, Cleve, and Franklin Harbour, present this monthly round-up of healthcare services for the region – an outcome of the Northern Eyre Health Care project, currently running until 2027.



IN THIS ISSUE

- **P2 VISITING HEALTHCARE SERVICES – MAY**
- **P3-4 SERVICES SPOTLIGHT – CARER SUPPORT**
- **P5-6 LOCUM DOCTOR ROSTER – MAY**

Thanking community for its voice on healthcare

The Northern Eyre Peninsula Health Alliance sincerely thanks all 400+ community members who took the time to complete a survey, send an email, or speak with the Northern Eyre Health Care project team during the consultation and on-site visits during February and March. Stay informed on the project's progress at the below website.



You can also like and follow the health alliance Facebook page, so you won't miss anything!
www.facebook.com/northerneyrehc

Website: yoursay.sa.gov.au/northern-eyre-health-care

Email: health.northerneyrehc@sa.gov.au

Phone: 0481 464 525



Northern Eyre Health Care

MONTHLY NEWSLETTER

MAY 2025

Our region's GP clinics

MID EYRE MEDICAL PRACTICE - multiple locations

COWELL · South Terrace, Cowell, (08) 8629 3035, Mon-Fri, 9am-5pm

CLEVE · 15 Main Street, (08) 8628 2003, Mon-Fri, 9am-5pm

KIMBA · 34-36 Park Terrace, Kimba, (08) 8627 2664, Mon-Fri, 9am-5pm

ELLISTON · 3 Memorial Drive, Elliston, (08) 8687 9110, Mon-Wed, 9am-5pm

WUDINNA MEDICAL PRACTICE

8 Richards Avenue, Wudinna, (08) 8680 2005, Mon-Fri, 9am-5.30pm

STREAKY BAY & DISTRICTS MEDICAL PRACTICE

1 William Crescent, Streaky Bay. 08 8626 1072, Mon-Fri, 9am-5pm

LOCK HEALTH & WELFARE CENTRE

17 North Terrace, Lock, (08) 8689 1006, Mon-Fri, 9am-5pm.

GP service Tuesday only, 9am - 1.30pm.

Visiting healthcare

MID EYRE MEDICAL PRACTICE - multiple locations

Rural Skin Cancer Service ·

Cleve 13 May and 10 June, Elliston 28 May, Cowell 4 June, Kimba 18 June.

Dr Joy O'Hazy (women's GP) ·

Cowell 7 May and 11 June, Kimba 8 May, 23 May, 24 June. Book online at: and 12 June, Cleve 22 May and 26 June. www.mattersofmeridians.com.au

Eyre Eye Centre (optometrist) ·

Cowell 28 May.

Paediatrician · Cleve 12 June.

Call Mid Eyre Medical Cleve on 8628 2004 for details and bookings.

CLEVE MASSAGE & WELLNESS COLLECTIVE

Port Lincoln Chiro · 20 May, 17 June.

Book by calling: 8683 0899.

Matters of Meridians Chinese

Medicine and Acupuncture ·

6 May, 3 June. Ph: 0428 282 503.

Carl Schuster Holistic Counsellor ·

6 May, 3 June. Ph: 0428 282 503.

Your Local Podiatrist EP · 6 May, 17

June. Ph: 0426 923 295 or visit

www.yourlocalpodiatristep.com

JLP Physiotherapy · Mondays (excluding 12 May). Ph: 0426 018 399

Website: yoursay.sa.gov.au/northern-eyre-health-care

Email: health.northerneyrehc@sa.gov.au

Phone: 0481 464 525



Northern Eyre Health Care SERVICE *spotlight*

Carer support services available to all Australians

This month the spotlight is on carers.

Are you or someone you know living with a serious life-limiting illness?

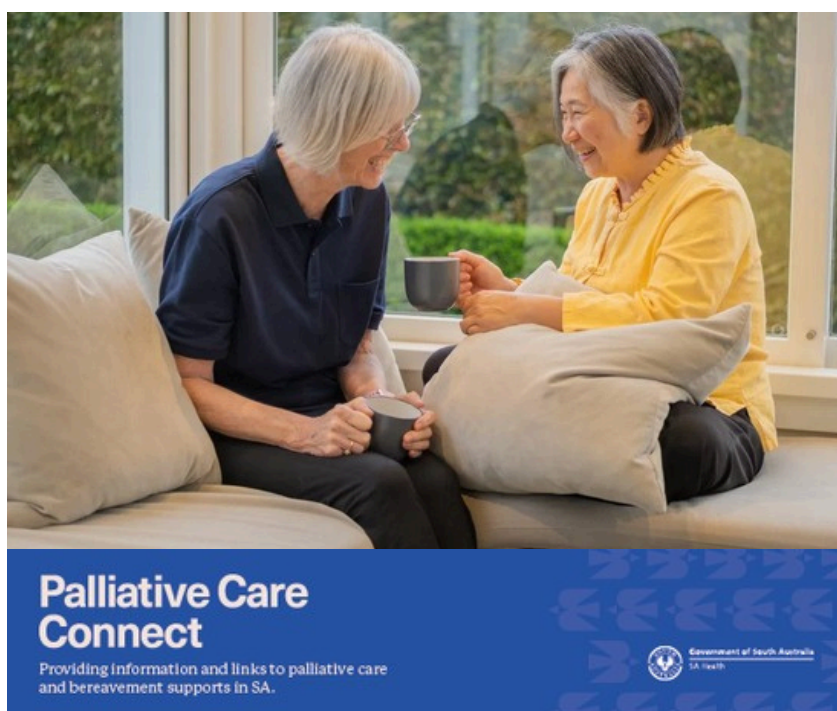
Are you a carer for a family member or loved one?

There are a range of information services and supports available to Australians fulfilling carer roles and to those living with life-limiting illnesses – regardless of where you live.

Palliative Care Connect

Providing information about palliative care and bereavement supports in South Australia to those who are dying and their loved ones.

Palliative Care Connect is a statewide service that provides information and links to palliative care services to those suffering long-term illness, and their carers, family, and friends. Palliative Care Connect provides access to a Palliative Care Navigator service via phone. Palliative care navigators can offer support and advice to those living with a



chronic life-limiting illness, or those caring for them.

The service is available Monday–Friday, 8:30am–4pm by phone or

1800 725 548 (PALLI8), or you can access the service online any time at: www.palliativecareconnect.com.au

Northern Eyre Health Care SERVICE *spotlight*

Carer support services available to all Australians

Carer Gateway



Carer Gateway helps carers access a range of free services and supports.

Carer Gateway is an Australian Government program supporting carers across Australia to access services.

Carer Gateway provides a range of supports to carers including:

- In-person and phone counselling
- Online skills courses to support your caring role
- Access to emergency respite if you can no longer provide care
- Help accessing tailored support packages
- Connections with peer support groups

Contact Carer Gateway by visiting www.carergateway.gov.au/ or call 1800 422 737 - phone service available Monday-Friday 8am-5pm.



CarerHelp



An online resource for carers looking after someone who is seriously ill.



CarerHelp is a government funded online resource that offers information to those caring for others, including those who are dying.

A range of Rural Caring Resources have been developed for those living and caring for others in the country.

Many topics are also covered within the resources, including finances and legal, grief and loss, death and dying, health and wellbeing, diseases, home care tips and relationships.

www.carerhelp.com.au/Communities/Caring-in-the-country/Rural-Caring-Resources

2025

MAY

Northern Eyre Health Care Locum doctor roster

Streaky Bay . Kimba

Monday	Tuesday	Wednesday	Thursday	Friday
28 Kimba: Dr Akonjee Streaky Bay: Dr Le Lievre	29 Kimba: Dr Akonjee Streaky Bay: Dr Le Lievre	30 Kimba: Dr Akonjee Streaky Bay: Dr Le Lievre	01 Kimba: Dr Akonjee Streaky Bay: Dr Le Lievre	02 Kimba: Dr Akonjee Streaky Bay: Dr Le Lievre
05 Kimba: Dr Mukwevho Streaky Bay: Dr Le Lievre	06 Kimba: Dr Mukwevho Streaky Bay: Dr Ashby	07 Kimba: Dr Mukwevho Streaky Bay: Dr Ashby	08 Kimba: Dr Mukwevho Streaky Bay: Dr Ashby	09 Kimba: Dr Mukwevho Streaky Bay: Dr Ashby
12 Kimba: Dr Viki Streaky Bay: Dr Ashby	13 Kimba: Dr Viki Streaky Bay: Dr Ashby	14 Kimba: Dr Viki Streaky Bay: Dr Ashby	15 Kimba: Dr Viki Streaky Bay: Dr Ashby	16 Kimba: Dr Viki Streaky Bay: Dr Ashby
19 Kimba: Dr Estrada Streaky Bay: Dr Olutayo	20 Kimba: Dr Estrada Streaky Bay: Dr Olutayo	21 Kimba: Dr Estrada Streaky Bay: Dr Olutayo	22 Kimba: Dr Estrada Streaky Bay: Dr Olutayo	23 Kimba: Dr Estrada Streaky Bay: Dr Olutayo
26 Kimba: Dr Estrada Streaky Bay: Dr Olutayo	27 Kimba: Dr Estrada Streaky Bay: Dr Olutayo	28 Kimba: Dr Estrada Streaky Bay: Dr Olutayo	29 Kimba: Dr Estrada Streaky Bay: Dr Olutayo	30 Kimba: Dr Estrada Streaky Bay: Dr Olutayo

Returning in June: Dr Mukwevho, Dr Udalamatta, Dr Inwang, Dr Nolan, Dr Omar Said, Dr Kad, Dr Lok

2025

MAY

Northern Eyre Health Care Locum doctor roster
Cleve . Cowell . Elliston

Monday	Tuesday	Wednesday	Thursday	Friday
28 Elliston: Dr Maroussem Cowell: Dr Kada Cleve: Dr Gora	29 Elliston: Dr Maroussem Cowell: Dr Kada Cleve: Dr Gora	30 Elliston: Dr Maroussem Cowell: Dr Kada Cleve: Dr Gora	01 Cowell: Dr Kada Cleve: Dr Gora Dr Maroussem	02 Cowell: Dr Kada Cleve: Dr Gora Dr Maroussem
05 Elliston: Dr Kada Cowell: Dr Sorensen Cleve: Dr McManus	06 Elliston: Dr Kada Cowell: Dr Sorensen Cleve: Dr McManus	07 Elliston: Dr Kada Cowell: Dr Sorensen Cleve: Dr McManus	08 Cowell: Dr Sorensen Cleve: Dr Kada, Dr McManus	09 Cowell: Dr Sorensen Cleve: Dr Kada, Dr McManus
12 Elliston: Dr Maroussem Cowell: Dr Kada Cleve: Dr Mukwevho	13 Elliston: Dr Maroussem Cowell: Dr Kada Cleve: Dr Mukwevho	14 Elliston: Dr Maroussem Cowell: Dr Kada Cleve: Dr Mukwevho	15 Cowell: Dr Kada Cleve: Dr Mukwevho, Dr Maroussem	16 Cowell: Dr Kada Cleve: Dr Mukwevho, Dr Maroussem
19 Elliston: Dr Clarke Cowell: Dr Kada Cleve: Dr Mukwevho	20 Elliston: Dr Clarke Cowell: Dr Kada Cleve: Dr Mukwevho	21 Elliston: Dr Clarke Cowell: Dr Kada Cleve: Dr Mukwevho	22 Cowell: Dr Kada Cleve: Dr Clarke, Dr Mukwevho	23 Cowell: Dr Kada Cleve: Dr Clarke, Dr Mukwevho
26 Elliston: Dr McManus Cowell: Dr Pyone Cleve: Dr Vignarajah	27 Elliston: Dr McManus Cowell: Dr Pyone Cleve: Dr Vignarajah	28 Elliston: Dr McManus Cowell: Dr Pyone Cleve: Dr Vignarajah	29 Cowell: Dr Pyone Cleve: Dr McManus, Dr Vignarajah	30 Cowell: Dr Pyone Cleve: Dr McManus, Dr Vignarajah

Returning in June: Dr Inwang, Dr Sorensen, Dr McManus, Dr Maroussem, Dr Dang, Dr Kada, Dr Clarke